

EASTERN DIVISION

Report to

BELFAST CITY COUNCIL

Autumn Update
2013



transportni

Department for

**Regional
Development**

www.drdni.gov.uk



**INVESTORS
IN PEOPLE**

CONTENTS	PAGE
FOREWORD BY DIVISIONAL ROADS MANAGER	5
1.0 INTRODUCTION	7
2.0 STRATEGIC ROAD IMPROVEMENTS	9
2.1 York Street Interchange Scheme	10
2.2 A2 Sydenham Bypass Improvement Scheme	11
2.3 A55 Knock Road Widening	11
3.0 NETWORK DEVELOPMENT	13
3.1 Possible Minor Works	14
3.2 Route Improvement Studies	14
3.3 Maintenance of Structures	15
3.4 Belfast On The Move	17
3.5 Other Bus Measures	18
4.0 NETWORK TRAFFIC AND STREET LIGHTING	19
4.1 Collision Remedial Schemes	20
4.2 Traffic Schemes	20
4.3 Pedestrian Measures	20
4.4 Safer Routes to School	21
4.5 Traffic Signs	21
4.6 Carriageway Markings	22
4.7 Legislation	23
4.8 Disabled Parking Bays	24
4.9 Street Lighting	25
4.10 Cycle Measures	26
4.11 Traffic Calming	27
4.12 Car Parking	27
4.13 Residents' Parking	28
5.0 NETWORK TRANSPORT TELEMATICS	29
5.1 Network Transport Telematics	30
6.0 NETWORK MAINTENANCE	33
6.1 Carriageway Resurfacing	34
6.2 Footway Resurfacing	35
6.3 Drainage	36
6.4 Carriageway Refurbishment	37
6.5 Public Realm	37
6.6 Liaison with Utilities	38
7.0 NETWORK PLANNING	39
7.1 Adoptions	40
7.2 Planning Applications	40

FOREWORD BY THE DIVISIONAL ROADS MANAGER



Bertie Ellison
Divisional Roads Manager



Roy Spiers
Deputy Divisional Roads Manager

Members of Belfast City Council

I am pleased to present this report to the Council members.
This updates the comprehensive report presented to Council in the spring of this year.

I look forward to our meeting on 28th October.

Bertie Ellison
Divisional Roads Manager
Eastern Division
'Hydebank'
4 Hospital Road
Belfast BT8 8JL

1.0 INTRODUCTION

The Eastern Division is one of 4 Divisions within Roads Service. It spans the local Council areas of Belfast, Carrickfergus, Castlereagh, Lisburn, Newtownabbey and North Down. (See Fig.1 below)

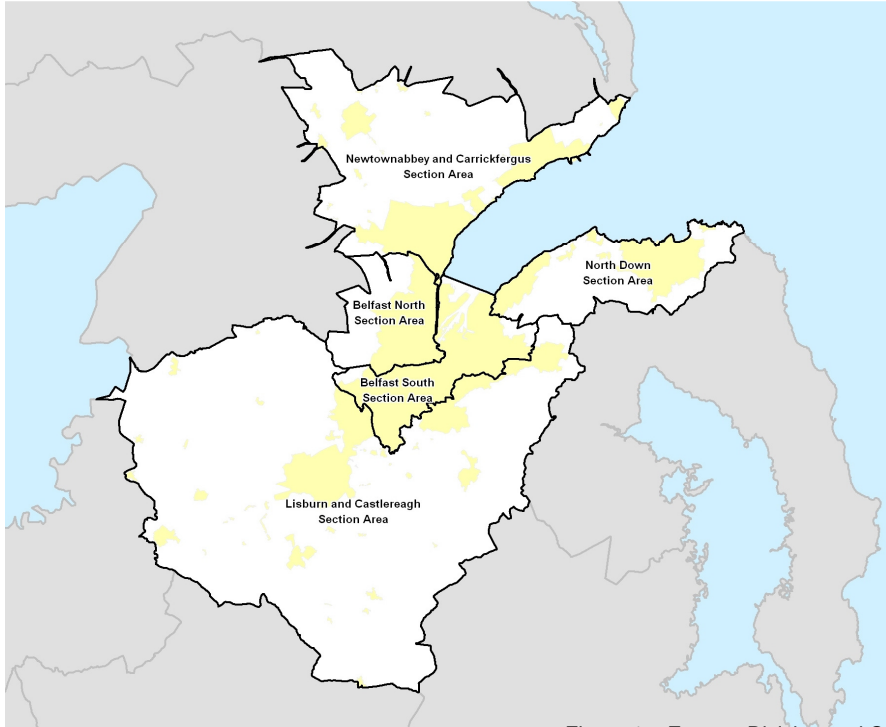


Figure 1 – Eastern Division and Council Areas

Eastern Division is part of the overall structure of Roads Service (see figure 2 below) which is based on separate business units for those who order services (clients) and for those who provide services (Roads Service Consultancy and Roads Service Direct).

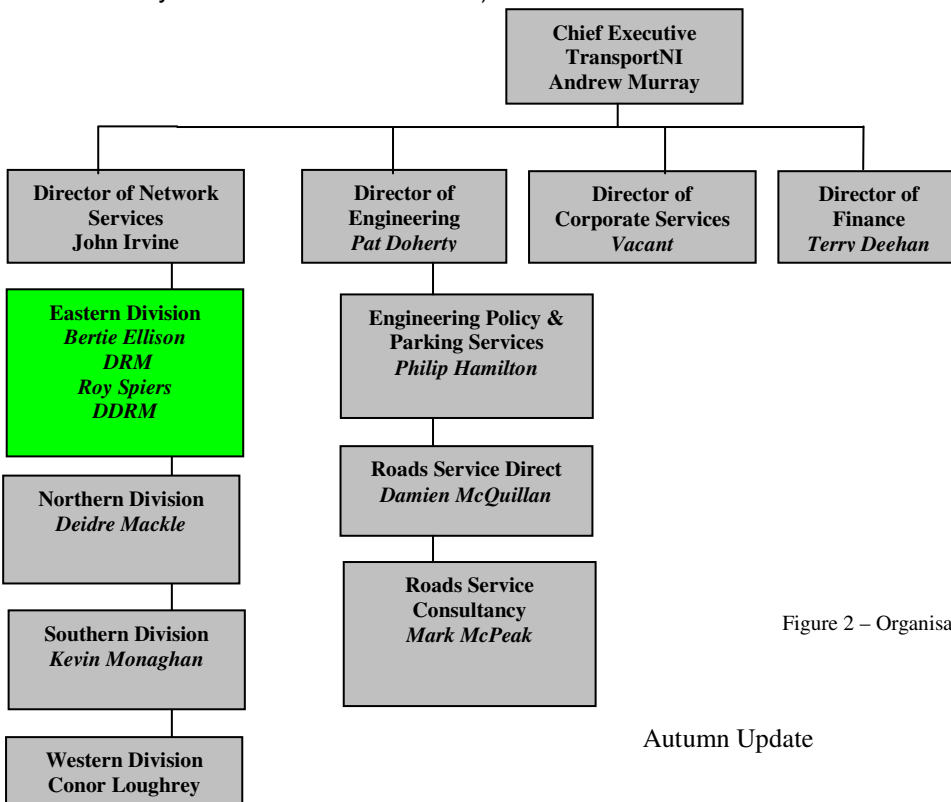


Figure 2 – Organisation Context

Eastern Division Management Structure



Bertie Ellison (9025 3001) bertie.ellison@drdni.gov.uk
Divisional Roads Manager



Norman Chambers (9025 3006) norman.chambers@drdni.gov.uk
Network Traffic and Street Lighting

Traffic Management minor improvements, pedestrian priority, traffic orders, signing, collision remedial schemes, Street Lighting, resident and disabled parking, car parks and pay and display spaces, cycling and traffic calming.



Philip Robinson (9025 3080) philip.robinson@drdni.gov.uk
Network Planning

Development Control, Private Streets and Transport Assessments



Brian Maxwell (9025 4500) brian.maxwell@drdni.gov.uk
Network Transport Telematics

Traffic signal control, operation of the Traffic Information and Control Centre, Traffic and travel information and European projects INSTANT and STREETWISE.

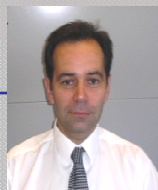


Attracta Tremers (9025 3036) attracta.tremers@drdni.gov.uk
Business Support

Financial control, land acquisition and disposal, retained human resources, building management and office supplies, council reports, business plan and communications.



Roy Spiers (9025 3002) roy.spiers@drdni.gov.uk
Deputy Divisional Roads Manager



Basil Hassard (9025 3272) basil.hassard@drdni.gov.uk
Strategic Route Improvements

Developing and progressing Strategic Highway Improvements within Eastern Division.



Stephen Pollock (9025 3071) stephen.pollock@drdni.gov.uk
Network Development

Minor works programme, maintenance and strengthening of structures, QBC & bus priority, 'Park and Ride schemes, Forward Planning, BoTM, and BRT infrastructure delivery.



Colin Sykes (9025 3111) colin.sykes@drdni.gov.uk
Network Maintenance

Maintenance of adopted roads and footways including inspections, resurfacing, drainage, grass cutting and weed control, winter gritting and liaison with the utility companies.

2.0 STRATEGIC ROAD IMPROVEMENTS

Principal Engineer acting DDRM – Roy Spiers(9025 3129) roy.spiers@drdni.gov.uk

He is supported by the following staff:

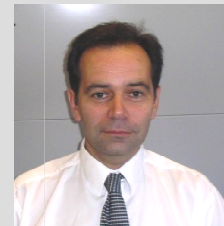
Strategic Road Improvement 1- Colin Pentland (9025 3212)
colin.pentland@drdni.gov.uk

Colin is responsible for progressing development of the York Street Scheme and is supported by Colin McBurney (9025 3016) Colin Pentland and Basil Hassard are alternatively acting Principal Engineer while Roy Spiers is acting Deputy Divisional Roads Manager.



Strategic Road Improvement 2 – Basil Hassard (9025 3272)
basil.hassard@drdni.gov.uk

Basil is responsible for development of the A2 Shore Road dual carriageway scheme, the M1 / A1 Link at Sprucefield and the Sydenham By-pass scheme.



2.1 YORK STREET INTERCHANGE SCHEME

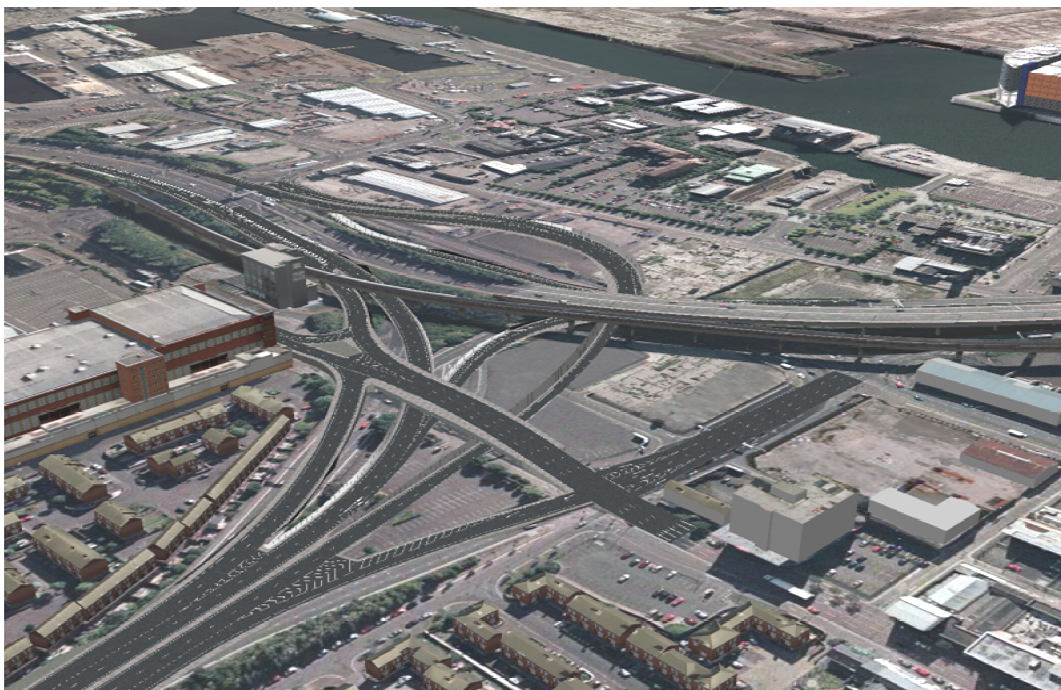
The Westlink / York Street junction is a key link on the Strategic Road Network that presently connects Westlink and the M2 and M3 motorways through a complex traffic signal controlled gyratory system, which also connects with the local road network. This arrangement (and its high traffic usage) causes significant congestion and long delays, particularly at peak times. The recent improvements to the M1/Westlink and M2 Motorway also mean that traffic is now being delivered much more quickly to this junction.

In March 2009, Roads Service completed the Preliminary Options Report, which assessed six options to grade separate the Westlink / York Street junction and provide direct links between

Westlink and the M2 and M3 motorways. The Report recommended that four preliminary options be taken forward for further detailed consideration at the next stage of development, the Stage 2 Scheme Assessment. This work included a public consultation event into the scheme options at the Ramada Encore Hotel, Belfast.

A Ministerial Announcement was made on the 6 December 2012 outlining the Preferred Option for the York Street Interchange at an event in the Ramada Encore Hotel. This event was attended by a number of elected representatives and key stakeholders. Following this announcement, work has commenced on scheme design and preparation of the Statutory Orders.

The proposal to upgrade the Westlink / York Street junction is being considered as part of the new Investment Strategy for Northern Ireland. The timescale for construction of the new junction will be dependent upon the successful completion of the necessary statutory procedures, an economic appraisal and the provision of funding through the normal budgetary processes.



One of four Preliminary Options to improve York Street Interchange

2.2 A2 SYDENHAM BYPASS IMPROVEMENT SCHEME

The A2 Sydenham Bypass is one of the most heavily trafficked carriageways in the Belfast Metropolitan Area and forms a vital section of the strategic highway network, linking Bangor and Belfast. The road also provides access to the key gateways of George Best Belfast City Airport, Belfast Port and to several large residential areas. The proposed scheme will widen a 2.5km stretch of the existing A2 Sydenham Bypass from a dual 2-lane carriageway to a dual 3-lane carriageway.

The scheme is currently in the third stage of a three stage assessment process. Stage 1 focused on identifying the environmental, engineering, economic and traffic advantages and disadvantages, as well as the constraints associated with broadly defined improvement strategies. This concluded in the selection of the Proposed Corridor in May 2008. In Stage 2, a detailed assessment of a range of options within the Proposed Corridor was considered. This concluded in the selection of the Preferred Option in February 2010. Stage 3 is currently underway and involves detailed assessment of the Preferred Option and ongoing consultation with key stakeholders. This will result in the completion of the Statutory Orders; the draft Direction Order, Environmental Statement and Notice of Intention to Make a Vesting Order.

The budget for the period to 2015 will allow development work on Stage 3 to continue. Progression of the scheme beyond this is subject to the satisfactory outcome of the statutory process and future years funding.

2.3 A55 KNOCK ROAD WIDENING

The public inquiry for this scheme was held in November 2010. The Inspectors' report, received in March 2011, made a number of recommendations and Roads Service carried out further traffic surveys and assessments in consideration of the report. The Inspectors' report and a response to the Inspectors' recommendations has now been considered and included in the Departmental Statement. The Notice of Intention to Proceed and the Direction Order were published in September 2012

The Department proposes to proceed with the scheme, however, there is no funding identified for its implementation before 2015. While funding has not been identified, this is one of several schemes which Roads Service continues to progress to a procurement ready position should additional funding become available.

3.0 NETWORK DEVELOPMENT

Principal Engineer – Stephen Pollock (9025 3071) stephen.pollock@drdni.gov.uk

He is supported by the following staff:

Works and Structures - David Grills (9025 3153)

david.grills@drdni.gov.uk

This team is responsible for major works, minor works and Structures.



Bus Priority - Harry Armstrong (9025 3022)

harry.armstrong@drdni.gov.uk

This team is responsible for delivery of the Quality Bus Corridor (QBC) programme, other bus priority measures and park and ride.



Forward Planning - Heather Bradley (9025 3164)

heather.bradley@drdni.gov.uk


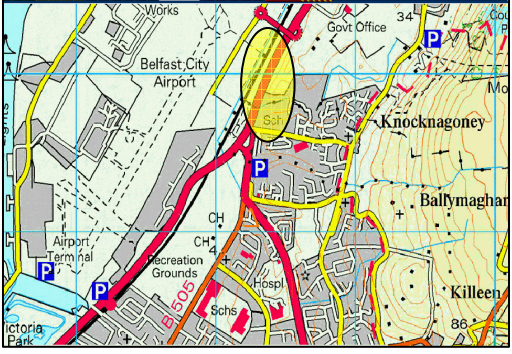
This team is responsible for the development of schemes on the strategic and non-strategic route network through route improvement studies.

It is also developing and progressing the management of the Belfast on the Move Transport Masterplan proposals for Belfast City Centre and is a point of contact for Belfast Metropolitan Area Plan inquiries, Noise Mapping Study and Regeneration Initiatives.



3.1 POSSIBLE MINOR WORKS

2013/14 Progress Report

Schemes for possible inclusion in future programmes	
Scheme Name	
<p>Tillysburn junction to Holywood Exchange roundabout. Provision of approximately 460m length of footway/cycleway. A feasibility study will be carried out to assess the possibility of providing a continuous link for pedestrians and cyclists from Tillysburn Roundabout to Holywood Exchange. Pending the outcome of the study the scheme would have to compete with other schemes for inclusion in any future programme of works. Implementation is then subject to the availability of the necessary land and finance.</p>	
	

Councillors are invited to suggest improvement schemes for consideration and evaluation.

3.2 ROUTE IMPROVEMENT STUDIES

The Division is continuing its assessment of the Division’s trunk and non-strategic rural routes to improve the safety and efficiency of these routes.

The assessment will include an analysis of;

- Traffic flows, both current and projected;
- Accident history;
- Characteristics of the route in terms of accessibility, integration and economy;
- Environment; and
- The practicality of constructing the schemes and the cost and availability of funds.

In general, route management studies will assess and identify road improvement opportunities along the route including the provision of safer overtaking opportunities, with short sections of climbing lanes or differential acceleration lanes where appropriate; provision of footways or cycle lanes; minor carriageway realignment; right turn provision and junction sightline improvement.

We are currently working on a route management study for the A20 Upper Newtownards Road from the A55 Outer Ring road at Knock to Newtownards. 2.5kms of the 9.5km route under review is within the Belfast City Council area.

3.3 MAINTENANCE OF STRUCTURES 2013/14 Progress Report

Scheme	Status
Principal Inspections	
Bridge No 20128 – York Road (Confined Space)	Completed
Bridge No 20139 – Ballysillan Road (Confined Space)	Completed
Bridge No 20142 – Springfield Road (Confined Space)	Completed
Bridge No 20144 – Shore Road Culvert (Confined Space)	Completed
Bridge No 20185 – Newtownards Road / Connswater (Confined Space)	Completed
Bridge No 20194 – A2 Belfast Road (Confined Space)	Completed
Bridge No 20205 – Newtownards Road (Confined Space)	Completed
Bridge No 20331 – Stockmans Way (Confined Space)	Completed
Bridge No 20138 - Mill Avenue	Completed
Bridge No 20140 - Forthriver Road	Completed
Bridge No 20157 - Deacon Street Culvert	Completed
Bridge No 20171 - Queen Elizabeth Bridge	Completed
Bridge No 20185 - Newtownards Rd / Connswater	Completed
Bridge No 20203 - Stoney Road. [A]	Completed
Bridge No 20204 - Stoney Road. [B]	Completed
Bridge No 20205 - Newtownards Road	Completed
Bridge No 20238 - Stockmans Lane North	Completed
Bridge No 20256 - Kings Bridge	Completed
Bridge No 20260 - Loop Bridge	Completed
Bridge No 20262 - Bells Bridge	Completed
Bridge No 20265 - Sandown Road	Completed
Bridge No 20267 - Knock Rd Culvert	Completed
Bridge No 20333 - Forthriver Primary School	Completed
Bridge No 26720 - Wellington Place Signal Gantry	Completed
Bridge No 26730 - Donegall Sq North Signal Gantry	Completed
Bridge No 26735 - Ann Street Signal Gantry	Completed

Scheme	Status
Bridge No 26750 - York St. Signal Gantry 1	Completed
Bridge No 26760 - York St. Signal Gantry 2	Completed
Bridge No 26770 - York St. Signal Gantry 3	Completed
Bridge No 26780 - M3 Northbound Sign Gantry	Completed
Bridge No 27065 - Middlepath Street Gantry	Completed
Bridge No – 20124 - East Bridge Street (Carriageway Span)	Programmed
Bridge No 20126 - East Bridge Street (Accommodation Span)	Programmed
Bridge No 20129 - Sunningdale Park	Programmed
Bridge No 20135 - Islandbawn Street / Clowney River	Programmed
Bridge No 20174 - Station Street Flyover	Programmed
Bridge No 20183 - Ballymacarrett Railway Arch	Programmed
Bridge No 20189 - Sydenham Bypass Footbridge	Programmed
Bridge No 20190 - Tillysburn Rail Bridge	Programmed
Bridge No 20195- North Road Bridge	Programmed
Bridge No 20198 - Belmont Park Footbridge	Programmed
Bridge No 20222 - Lislea Avenue Footbridge	Programmed
Bridge No 20234 - Blacks Road Rail Bridge	Programmed
Bridge No 20246 - Donegall Road Railway Bridge at Roden Street	Programmed
Bridge No 20247 Abingdon Street Footbridge.	Programmed
Bridge No 20251 - Lower Windsor Avenue Footbridge	Programmed
Bridge No 20252 - Lisburn Road / University Road	Programmed
Bridge No 20253 - Botanic Avenue	Programmed
Bridge No 20254 - Ormeau Road Rail Bridge	Programmed
Concrete / Composite Structures	
Bridge No 20134. Dee Street Bridge. Parapet Replacement and Repairs	Completed
Bridge No. 20169 - Boyne Bridge. Repair to steelwork, repainting and spalled concrete on soffit of deck	Completed
Steel Structures	
Bridge No 20250. Tate's Avenue (Railway Span). Repainting of beams	In progress

Scheme	Status
Masonry Structures	
Ben Madigan Heights. Construction of new retaining wall	Completed
Bridge No. 20248. Donegall Road at City Hospital Railway Bridge. Repair to masonry parapet	In progress
Antrim Road near Ben Madigan Park. Repairs to Retaining Wall	Programmed

3.4 BELFAST ON THE MOVE

Bus lanes are now fully operational across Belfast city centre as part of the Belfast On The Move project. The bus lanes are for use by buses, permitted taxis, motorcycles and cycles only between 7am and 7pm Monday to Saturday.



The works were substantially completed on 31 May allowing sufficient time for the changes to 'bed in' over the summer months before the schools returned in September.

Figures show public transport use has increased and traffic flows in the city centre have improved. The Metro passenger journey figures for the first five months (April to August) of 2013/14 show an increase of over 120,000 journeys compared to the same period in 2012/13.

On Donegall Square South - 40-50% of people travelling by road at peak times are in a bus, whilst only 10% of the vehicles on the road are buses.

The Great Victoria Street bus lane carries two thirds of commuters in the am peak, yet it only takes up one half of the available road space.

The Fisherwick Place bus lane carries about one half of commuters and only takes up one of the available 3 lanes, highlighting that the distribution of road space is therefore fully justified in terms of moving people, rather than vehicles.


Prior to the commencement of the works surveys were carried out on traffic flows on all the arterial routes into and through the city centre. Following the completion of the works surveys will be carried out in October 2013 to measure the success of the project. These surveys will include traffic flows, car parking, journey times and bus lane usage. In addition the Department is liaising with Translink in relation to the impact the project has had on public transport services within the city. This will include

passenger numbers, journey times and reliability. The results of the surveys will be published when full analysis has been carried out.

Details of all the works carried out as part of the project can be found on the at 'Belfast on the Move' web site at www.drdni.gov.uk/index/belfastonthemove.htm.

3.5 OTHER BUS MEASURES

2013/14 Progress Report

Scheme	Status
Castlereagh Street – widening near Albertbridge Road junction to facilitate a more efficient traffic flow and assist bus reliability.	Construction began on 26 th August 2013
Hannahstown Hill Bus Turning Circle Facility - to permit an extension of Metro bus services. 	Completed in July 2013 and now served by Metro
Black's Road Park & Ride –Extension to P&R site to accommodate approximately 30 - 35 cars.	Design completed and contractor due to go on site Autumn 2013
Adelaide Street – Amendments proposed to existing bus stops to improve passenger waiting facilities and bus movements.	Currently being designed with a view to construction during early 2014
East Bridge Street to May Street –With flow bus lane to improve bus speed and reliability –Amendment in legislation to align with other city centre bus lanes from 07.00 -19.00 Mon –Sat	Came into force May 2013

4.0 NETWORK TRAFFIC AND STREET LIGHTING

Principal Engineer – Norman Chambers (9025 3006) norman.chambers@drdni.gov.uk

He is supported by the following staff:

Traffic Management 1 - Roy Gordon (9025 3007)
roy.gordon@drdni.gov.uk



This team deals with traffic improvement schemes in Carrickfergus, Newtownabbey and Belfast.

Traffic Management 2 - Graeme Salmon (9025 3026)
graeme.salmon@drdni.gov.uk



This team deals with traffic improvement schemes in Lisburn, Castlereagh and North Down and collision remedial schemes in all council areas.

Traffic Management 3 - Paul King (9025 3029)
paul.king@drdni.gov.uk



This team is responsible for residents' parking, development of car parking, cycle measures and traffic calming.

Street Lighting - David Wright (9025 3057)
david.wright@drdni.gov.uk



This team is responsible for Street Lighting, traffic bollards and the illumination of signs.

4.1 COLLISION REMEDIAL SCHEMES

2013/14 Progress Report

<i>Scheme</i>	<i>Status</i>
Crumlin Road / Ballyutoag Road – high friction surfacing and enhanced signing	In progress
East Bridge Street at Central Station – high friction surfacing and crossing upgrade	In progress
Andersonstown Road / Kennedy Way Roundabout – high friction surfacing on approaches	In progress

4.2 TRAFFIC SCHEMES

2013/14 Progress Report

<i>Scheme</i>	<i>Status</i>
Belmont Road through village – limited waiting parking	In Progress
Springfield Road – upgrade of zebra crossing	Programmed

4.3 PEDESTRIAN MEASURES

2013/14 Progress Report

<i>Scheme</i>	<i>Status</i>
Antrim Road at Fortwilliam Park – additional controlled pedestrian phase across Fortwilliam Park	Completed
Lisburn Road at Cranmore Park – puffin crossing	Programmed
Oldpark Road near Oldpark Terrace – pedestrian crossing	In Abeyance
Oldpark Road at Oldpark Avenue – change zebra crossing to puffin crossing	Programmed
Springfield Road at Cupar Street - change zebra crossing to puffin crossing	Programmed
Stranmillis Road at roundabout – zebra crossing upgrade	Programmed
Upper Newtownards Road – dropped kerb scheme	Completed

4.4 SAFER ROUTES TO SCHOOL

2013/14 Progress Report

<i>Scheme</i>	<i>Status</i>
Finaghy Primary School, Finaghy Road South	Programmed
Greenwood Primary School and Bloomfield Collegiate School, Upper Newtownards Road	Programmed
Ligoniel Primary School, Ligoniel Road	Completed
Saint Vincent de Paul Primary School, Ligoniel Road	Completed

4.5 TRAFFIC SIGNS

2013/14 Progress Report

<i>Scheme</i>	<i>Status</i>
Traffic signs provided to date;	
Cameronian Drive and Marina Park – 2 no. 'Children/School' signs	Completed
Divis Street at Westlink off-slip – direction sign	In Progress
Ormeau Road at Saint John's Avenue – pelican crossing warning sign	In Progress
Seaview Drive – 'Children Crossing' sign and 'School' plate	In Progress
Serpentine Road, Ballyrone Hill and Mulderg Drive – 4 no. 'Children/playground' signs	Completed
Shankill Road at Crimea Street and North Howard Street – pelican crossing warning signs	In Progress
Shore Road at Greencastle – 10 no. 'One-way' repeater signs, 4 no. 'Turn left' one way supplementary plates, 2 no. 'Lane merge' signs	In Progress
Stewartstown Road at Lenadoon Avenue and Suffolk Avenue – pelican crossing warning signs	In Progress
West Circular Road and Old Cavehill Road – 4 no. 'School Traffic' signs to Cavehill Primary School	Completed

4.6 CARRIAGEWAY MARKINGS

2013/14 Progress Report

<i>Scheme</i>	<i>Status</i>
Carriageway markings provided to date;	
Alloa Street at entrance to play park – 3 no. sections of pedestrian guard rail	In Progress
Arosa Parade at York Road – corner restrictions	Completed
Beechmount Street at Beechmount Avenue – corner restrictions and ‘Give Way’ markings	Completed
Boucher Road at Charles Hurst – yellow box junction marking	Completed
Craven Street – corner restriction	Completed
Crumlin Road at Ligoniel Road – lay-by parking markings	In Progress
Grand Parade at Orangefield Park – 2 no. section pedestrian guard rail	Completed
Gresham Street – ‘I’ bar marking at dropped kerb	Completed
Hannah Glen Heights at Glen Road – ‘Give Way’ marking	In Progress
Kings Road – ‘yellow box’ marking	Completed
Knocknagoney Road at Tillysburn junction – new guide lines	In Progress
Landscape Terrace (off Crumlin Road) – ‘I’ bar marking	Completed
Lockview Road – ‘end of parking’ marks	In Progress
M1 southbound off-slip at Stockman’s Lane – lane guidelines	Completed
Massey Avenue at Stormont Estate – corner restrictions and bay markings	Completed
Norfolk Gardens at Norfolk Parade – ‘Give Way’ marking	Completed
Prince Andrew Park at Donegall Road – corner restrictions	Completed
Salisbury Court – corner restrictions	Completed
Shore Road at Greencastle – 5 no. ‘straight ahead’ and 1 no. ‘turn left’ arrows and hazard marking at police station	Completed
Springfield Road near Falls Road – limited waiting	Completed
Spruce Hill at Glen Road – ‘Give Way’ marking	In Progress
Station Street at Middlepath Street – Guidelines, lane arrows/markings	Completed

<i>Scheme</i>	<i>Status</i>
Stoneyford Street – corner restrictions	Completed
Solway Street at Newtownards Road – corner restriction	Completed
Suffolk Avenue – ‘Give Way’ triangle	Completed
Tennent Street/Hillview Road – corner restrictions	Completed
Upper Riga Street – ‘School Keep Clear’ marking	Completed
Wellington Square – corner restrictions	Completed

4.7 LEGISLATION

2013/14 Progress Report

<i>Scheme</i>	<i>Status</i>
WAITING RESTRICTIONS	
Crumlin Road at Jail – At Any Time	In Progress
Mulhouse Road – At Any Time	Completed
Musgrave Park – At Any Time	In Progress
Nelson Street – limited waiting	In Progress
Ormeau Road (McClure Street to Donegall Pass) – At Any Time	Completed
Serpentine Road near Serpentine Gardens – At Any Time	In Progress
TRAFFIC ORDERS	
Holylands area – one way traffic system	In Progress
Lisburn Road – Tidal Urban Clearway	In Progress
Malone Road - Tidal Urban Clearway	In Progress
Stranmillis Road – Tidal Urban Clearway	In Progress

4.8 DISABLED PARKING BAYS

2013/14 Progress Report

<i>Scheme</i>	<i>Status</i>
Application for 'disabled' parking bays will be assessed on an individual basis as they are received. Bays completed/removed to date;	
99 Cullingtree Road	In Progress
9 Forthriver Park	In Progress
33 Hopefield Avenue	Completed
19 Inverary Avenue	In Progress
78 North Parade	Completed
2 Oceanic Avenue	Completed
19 Wilhem Street	Completed
41 Willowfield Parade	Completed
Bays provided as part of Sustainable Transport Enabling Measures, Belfast City centre; Adelaide Street, Bedford Street, Castle Place, Chichester Street, College Square East, Fisherwick Place, Great Victoria Street, Queen Street, Upper Arthur Street, Upper Queen Street and Wellington Place.	Completed
Disabled parking bays to be removed	
28 Bloomfield Avenue	Completed
107 Connsbrook Avenue	Completed
36 Ponsonby Avenue	In Progress
13 Windsor Road	In Progress

4.9 STREET LIGHTING

2013/14 Progress Report

<i>Scheme</i>	<i>Status</i>
College Park Avenue	*Programmed
Summerhill Avenue	Completed
Greenville Road	Completed
Osbourne Gardens	*Programmed
Governors Bridge	*Programmed
Florenceville Drive	In Progress
Forthriver Road	Completed
Rosapenna Street	Completed
Halidays Road	*Programmed
Ventry Street	*Programmed
Jamaica Road	Completed
Manor Street	Completed
Cliftonville Road	Completed
Glenside Park	Completed
Shannon Street	Completed
Dargan Crescent	Completed
Balmoral Link / Road	In progress
Boucher Crescent	In Progress
Upper Kennedy Way	Programmed
Glen Road	Programmed
Suffolk Road	Programmed
Ormonde Gardens	Programmed
Willisfield Park / Gardens / Avenue	Programmed
Wedderburn Park / Gardens / Avenue	Programmed

<i>Scheme</i>	<i>Status</i>
Rathmore Park / Gardens	Programmed
Falls Road (Whiterock Road – PSNI station)	Programmed
Falls Road (Whiterock Road – Broadway)	Programmed
Glen Ober Park	Programmed
Duncairn Gardens / Brougham Street	Programmed
New Barnsley Park / Crescent	Completed
Glenalina Road	Completed
Glenside Parade	In Progress
Distillery Street	Completed
Duncrue Road	Programmed

* carried over from 2012/13 Programme

4.10 CYCLE MEASURES

2013/14 Progress Report

<i>Scheme</i>	<i>Status</i>
Albertbridge Road – cycle lanes and cycle track.	Awaiting signage.
Fane Street – Wheeling ramps.	Programmed.
Apsley Street – Contra flow lane for cyclists.	Completed.
Ravenhill Road (slip Road) at Albertbridge Road Junction – Road Hump.	On site.

4.11 TRAFFIC CALMING

2013/14 Progress Report

<i>Scheme</i>	<i>Status</i>
*Belmont Road – Gateway measures	Programmed for construction.
Connsbrook Avenue – Traffic calming scheme	Review will be completed in October following completion of new traffic survey. Decision will then be made on whether to proceed with this scheme or not.
Ligoniel Road – Traffic calming scheme	Programmed for construction.

*Additional to 2013/14 programme.

It should be noted that all Traffic Calming schemes are subject to a legislative process and to the availability of funding before they can proceed.

The legislative process provides for representations / objections to be received on our proposals. Where residents do not support individual schemes or where objections are received, it may not be possible to deliver our intended programme. In this event substitutions, on a Division-wide basis, may be made throughout the financial year.

4.12 CAR PARKING

2013/14 Progress Report

<i>Scheme</i>	<i>Status</i>
Provision of additional On-Street Pay and Display spaces as identified.	<p>A letter has been sent to Council indicating the streets where we propose providing additional on-Street Pay and Display parking.</p> <p>We are awaiting a reply from Council and an indication of support before we progress with this issue.</p>
Review of our off and on-street parking charges.	Following the Executive's announcement on 8 November 2012 car parking charges in towns and city centres will be frozen at current levels until at least 2015.

<i>Scheme</i>	<i>Status</i>
Motorcycle parking	We are currently consulting with motorcyclists who regularly park in Belfast with a view to providing free dedicated on-street motorcycle parking, at various locations, on a trial basis.
Car Park Maintenance	On-going maintenance continues to be undertaken to our off-street car parks as required.

4.13 RESIDENTS' PARKING

The legislation is currently being drafted for Northern Ireland's first residents' parking schemes and we expect to have a draft Lower Malone Resident's Parking Order cleared for formal consultation by early 2014.

Discussions with the residents' and business associations in the Stranmillis area are still continuing with the aim of implementing a scheme. We are still awaiting details of the business association's preferred arrangement for the proposed scheme. Once we receive this we will attempt to broker agreement between the residents' and business associations.

We are liaising with local representatives/residents from the Donegall Pass, Sandy Row and Rugby Road/College Park Avenue areas and we plan to consult informally in all three areas during October/November 2013.

5.0 NETWORK TRANSPORT TELEMATICS

Principal Engineer – Brian Maxwell (9025 4500) brian.maxwell@drdni.gov.uk

He is supported by the following staff:

Declan Murphy (9025 4536) declan.murphy@drdni.gov.uk

This team is responsible for the day to day running of the Traffic Information and Control Centre. It is responsible for the installation, maintenance and operation of Intelligent Transport Systems (ITS) including traffic control on the urban and motorway networks and the provision of traffic and travel information.



Damien King (9025 4529) damien.king@drdni.gov.uk

This team has specific responsibilities for issues of Road Safety including the development of the Road Safety Engineering Report and the establishment of Central Road Safety Unit. It is also responsible for compiling traffic census, vehicle kilometre travel surveys and managing the road works website.



TICC's TrafficwatchNI website



M1 / A12 Westlink Managed Route

5.1 NETWORK TRANSPORT TELEMATICS 2013/14 Progress Report

Scheme	Status
TRAFFIC AND TRAVEL INFORMATION	
The TrafficwatchNI website will be enhanced to include better mapping and Road Works Information. We will also investigate the benefits of incorporating social media feeds.	In Progress
Subject to adequate funding the coverage of electronic variable message signs (VMS) will be enhanced on the strategic and/or urban networks.	Programmed
PELICAN CROSSINGS	
<p>The Remote Monitoring System (RMS) enables TICC to monitor the operation of pelican crossings from the Control Centre.</p> <p>RMS coverage has been extended to the following 11 crossings in Belfast;</p> <ul style="list-style-type: none"> • Andersonstown Road at Stockman's Lane • Antrim Road At Baltic Avenue • Antrim Road at Cedar Avenue • Antrim Road at Chichester Road • Antrim Road at Salisbury Avenue • Antrim Road at Serpentine Road • Antrim Road at Willowbank Gardens • Belmont Road at Bathgate Drive • Belmont Road at Belmont Church Road • Belmont Road at Wandsworth Gardens • Glen Road at Christian Brothers School 	<p>Completed</p> <p>Completed</p> <p>Completed</p> <p>Completed</p> <p>Completed</p> <p>Completed</p> <p>Completed</p> <p>Completed</p> <p>Completed</p> <p>Completed</p> <p>Completed</p> <p>Completed</p>
URBAN CLOSED CIRCUIT TELEVISION (CCTV) CAMERAS	
Review CCTV coverage to ensure its continued adequacy and identify camera locations that are in need of upgrade.	Ongoing

Scheme	Status
TRAFFIC SIGNALS	
We will monitor traffic signal timings to ensure they are appropriate for the prevailing traffic conditions and subject to adequate funding we will upgrade traffic signal equipment where necessary.	Ongoing
MOTORWAY COMMUNICATIONS AND CONTROL	
Utilise TICC's motorway communications & control infrastructure together with CCTV traffic monitoring facilities to efficiently manage traffic on motorways and the Westlink.	Ongoing
Investigate possible enhancements to the Motorway Control Instation system.	Programmed
Audit Motorway Intelligent Transport infrastructure for continued health and safety access compliance.	Programmed
Investigate possible improvements to M1 traffic flow both approaching and leaving the city	Further modelling of traffic flows at Black's Road off-slip.
BUS PRIORITY	
Subject to adequate funding, extend Bus traffic light priority to include the Hollywood Road in Belfast.	Programmed
JOURNEY TIME MEASUREMENT	
Subject to adequate funding, extend coverage of Journey Time estimation cameras to provide travel times for Road Users on strategic routes serving Belfast.	Programmed
CENTRAL ROAD SAFETY UNIT	
This unit will continue to have a strategic overview of road safety and the analysis of collision data on roads across the Province.	Ongoing
Install 2 permanent traffic counting sites.	Programmed

6.0 NETWORK MAINTENANCE

Principal Engineer – Colin Sykes (9025 3111) colin.sykes@drdni.gov.uk

He is supported by the following staff:

**Support Services Manager- Aidan O’Callaghan
(9025 3098)**

aidan.o'callaghan@drdni.gov.uk

This team is based at Hydebank and is responsible for general co-ordination, bidding, allocating and monitoring finances, maintenance of safety fences, contract monitoring, statistics and enforcement.



**Belfast North Section Engineer – Brian O’Neill
(9025 4044)**

brian.oneill@drdni.gov.uk

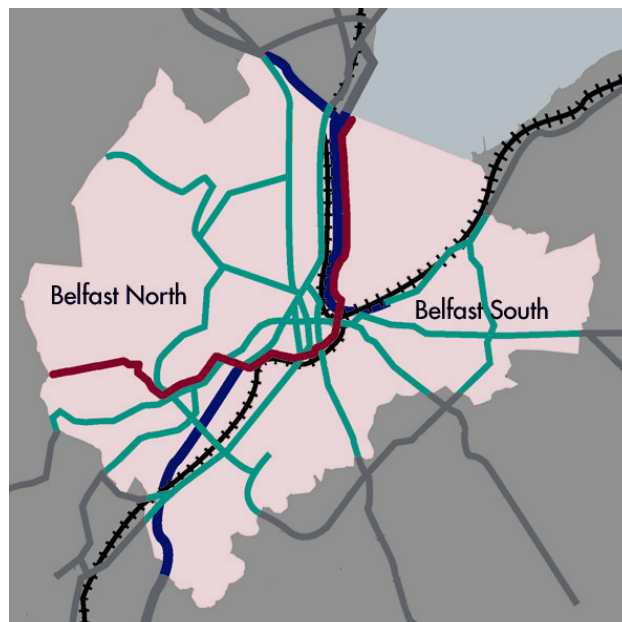
148 – 158 Corporation Street, Belfast, BT1 3DH
This team is responsible for contacts with the public and elected representatives, highway inspections, resurfacing, responsive repairs, routine maintenance, winter gritting, road opening consents and licences, public liability claims and liaison with the service utility companies.



**Belfast South Section Engineer - Gareth McKibbin
(9025 4609)**

gareth.mckibbin@drdni.gov.uk

1a Airport Road, Belfast, BT3 9DY
(As Belfast North)



6.1 CARRIAGEWAY RESURFACING

2013/14 Progress Report

<i>Scheme</i>	<i>Status</i>
BELFAST SOUTH	
From April 2013, 10.93 km of carriageway has been resurfaced in the Belfast South area. This equates to 48,820 sqm and includes the schemes listed below.	
Broomhill Park including Broomhill Park Central	Completed
Cloverhill Park/Gardens	Completed
Cricklewood Park	Completed
Belmont Road - Hawthornden Gardens to Massey Avenue	Completed
Finaghy Road South	Completed
Glen Road – Shaws Road to Suffolk Road	Completed
Andersonstown Road Roundabout	Completed
Ballymiscaw Road – Part	Programmed
Derlett Street	Completed
Avoniel Road	Completed*
North Road	Ongoing*
Massey Avenue	Ongoing*
Piney Hills and The Plateau	Ongoing*
Ardcarn Park – Carnet House	Completed*
Lisburn Road – Ulsterville Avenue to Windsor Park	Ongoing*
Kennedy Way – Glen Road to Andersonstown Road	Programmed*
BELFAST NORTH	
From April 2013, 6.28 km of carriageway has been resurfaced in the North Belfast area. This equates to approximately 26265 sqm and includes the schemes listed below.	
Alliance Road	Completed
Great Victoria Street (Bruce Street to Grosvenor Road)	Completed
High Street	Completed
Springfield Road (Springfield Park to West Circular Road)	Completed
Springfield Road (West Circular Road to Watermouth Street)	Completed
Westland Road (Old Westland Road to Oldpark Road)	Completed
Duncrue Street	Programmed *

<i>Scheme</i>	<i>Status</i>
Wheatfield Crescent	Programmed *
Ligoniel Road	Programmed *
Donegall Square West	Programmed *

* Additional to Programme

6.2 FOOTWAY RESURFACING

2013/14 Progress Report

<i>Scheme</i>	<i>Status</i>
BELFAST SOUTH	
From April 2013, 9.14 km of footway has been resurfaced in the Belfast South area. This includes the schemes listed below.	
Broomhill Park including Broomhill Park Central	Completed
Cloverhill Park/Gardens	Completed
Cricklewood Park	Completed
Belmont Road (Hawthornden Gardens to Massey Ave)	Completed
Finaghy Road South	Completed
Glen Road – Shaws Road to Suffolk Road	Completed
Derlett Street	Completed
Avoniel Road	Completed*
North Road	Ongoing*
Massey Avenue	Ongoing*
Piney Hills and The Plateau	Ongoing*
BELFAST NORTH	
From April 2013, 3.4 km of footway has been resurfaced in the North Belfast area. This includes the schemes listed below.	
Britton's Drive	Completed
Britton's Parade	Completed
Whiterock Crescent	Completed
Whiterock Drive	Completed

<i>Scheme</i>	<i>Status</i>
Westland Estate	Completed
Glencollyer Street	Completed
Crosscollyer Street	Completed
Ballygomartin Road	Programmed *
Shore Road – Mount Vernon to Donegall Park Avenue	Programmed *
Shore Road – Skegoneil Avenue to Fortwilliam Park	Programmed *
Shore Road – No 824 to No 924	Programmed *
Whiterock Parade	Programmed *
Whiterock Gardens	Programmed *
Duncrue Street	Programmed *

* Additional to Programme

6.3 DRAINAGE

2013/14 Progress Report

<i>Scheme</i>	<i>Status</i>
BELFAST SOUTH	
Diamond Gardens	Completed
Finaghy Road North	Completed*
Mersey Street	Completed*
Lucerne Parade/ Lockview Road	Ongoing*

<i>Scheme</i>	<i>Status</i>
BELFAST NORTH	
Shore Road at Fortwilliam Park	Programmed
Shore Road at Whitewell Road lay-by	Programmed
Corporation Street at Corporation Square	Completed
Upper Cavehill Road	Completed

<i>Scheme</i>	<i>Status</i>
Garmoyle Street	In Progress
Upper Stanfield Street	In Progress*
Replacement of cast iron lids with plastic composite lids	Completed*
Ongoing replacement of Belfast Foundry pots as resource permits	In Progress*

* Additional to Programme

6.4 CARRIAGEWAY REFURBISHMENT **2013/14 Progress Report**

<i>Scheme</i>	<i>Status</i>
BELFAST SOUTH	
Stranmillis Road – Part	Programmed

6.5 PUBLIC REALM **2013/14 Progress Report** **Streets Ahead Project (DSD)**

<i>Scheme</i>	<i>Status</i>
BELFAST NORTH	
Bank Square, Bank Street, Berry Street and King Street	In Progress

6.6 LIAISON WITH UTILITIES **2013/14 Progress Report**

<i>Scheme</i>	<i>Status</i>
WATER SERVICE	

Scheme	Status
Roads Service staff will continue to work closely with NI Water and their Consultants on the major upgrade of NIW mains infrastructure throughout Belfast and in particular North Belfast.	In Progress
PHOENIX GAS	
No major infrastructure builds notified. Service connections for new customers are likely.	In Progress
VIRGIN MEDIA	
No major infrastructure builds notified. Service connections for new customers are likely.	In Progress
CABLE & WIRELESS	
No major infrastructure builds notified. Service connections for new customers are likely.	In Progress
POWER NI	
No major infrastructure builds notified. Service connections for new customers are likely.	In Progress
BT	
No major infrastructure builds notified. Service connections for new customers are likely.	In Progress
EIRCOM	
No major infrastructure builds notified. Service connections for new customers are likely.	In Progress
HIBERNIA ATLANTIC	
No major infrastructure builds notified. Service connections for new customers are likely.	In Progress

7.0 NETWORK PLANNING

Principal Engineer – Philip Robinson (9025 3080) philip.robinson@drdni.gov.uk

He is supported by the following staff:

Development Control Team 1 – Sid Stevenson (9025 3588)
sid.stevenson@drdni.gov.uk

This team deals with development control for Belfast and Carrickfergus Council Areas. Sid is also responsible for private street determinations, bonds and adoption certificates for the Division.



Development Control Team 2- Colin Kelly (9025 3151)
colin.kelly@drdni.gov.uk

This team deals with development control for the Lisburn, and North Down Council Areas. Colin also provides specialist advice on development control issues.



Development Control Team 3 - Gabriel Doherty (9025 3154)
gabriel.doherty@drdni.gov.uk

This team deals with development control for Newtownabbey and Castlereagh Council areas. Gabriel also manages the review of Transport Assessments associated with planning applications and provides specialist advice in this area.



7.1 ADOPTIONS

Adoptions completed from last spring report

Location	Length Adopted (M)
Carr's Glen Park	85m of new 2.5m wide footway along the side of the Boy's Model School to main entrance at Ballysillian Road.
Donegall Road	456-458 Donegall Road: Junction of Rodney Parade, boundary set back 1m to provide a 1.8m footway accommodating 2 parallel parking bays.
Ormiston Square	5m of traditional carriageway with associated footways plus 50m of shared surface carriageway with 2m wide service strip on each side.
Rosehead	Rosehead: 392m of traditional carriageway and associated footways. Rosehead Drive: 48m of traditional carriageway and turning head with associated footways.
Rusholme Walk	25 linear metres of remote footway (block paved).
York Road	Streets off York Road, including: Arosa Parade: 211 square metres of footway plus a portion of parking lay-by equal to 80 square metres. Glasgow Street: 355 square metres of footway plus a portion of parking lay-by equal to 180 square metres. Harrisburg Street: 171 square metres of footway plus a portion of parking lay-by equal to 141 square metres. Mineral Street: 166 square metres of footway plus a portion of parking lay-by equal to 16 square metres. Pittsburg Street: 171 square metres of footway plus a portion of parking lay-by equal to 141 square metres.

7.2 PLANNING APPLICATIONS

DOE Planning already consults directly with the Council regarding planning applications which they receive in the Belfast Area. Roads Service Development Control teams advise DOE Planning on the roads and transportation issues associated with both major and minor planning applications.